



Daikin Air Conditioner Monitoring Tool Android App User Manual

For app ver1.1.0 or later

August 10, 2016

DAIKIN INDUSTRIES, LTD.

Introduction

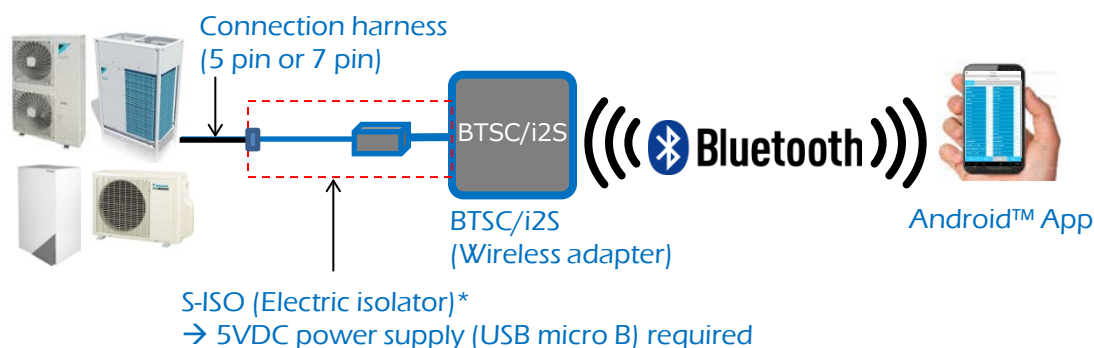
- This manual explains how to use “Daikin Air Conditioner Monitoring Tool ” app running on Android system. For instruction of PC version software, please refer to user guide for PC version software.
- This App supports Android 4.0 or higher.
- To monitor operation data of air conditioners, it is necessary to use with “Wireless Adapter” (model: BTSC/i2S). For instruction guide of BTSC/i2S, please refer to user guide of BTSC/i2S.
- To communicate with air conditioners through BTSC/2S from this app, Bluetooth communication is used. When using BTSC/2S, please keep **turning on Bluetooth function** of your device.
- Support model of this app is same as PC version software.

Supported products	Daikin Air Conditioner Monitoring Tool	Type 3 Checker
SkyAir	Models manufactured in 2003 and later*	Models manufactured in 1998 and later
RA	Models manufactured in 2002 and later*	Some models manufactured from 1992 to 1995
Chiller	Not supported	Some models manufactured in 2000 and later
VRV**	Models manufactured in 2003 and later*	Models manufactured in 1990 and later
Altherma LT:BB or later	Indoor unit models (2010 and later)	Not supported
Altherma HT	Not supported	AB models (2010 and later)
Altherma Flex	Not supported	All models

* Exceptions may apply (even though applicable to this condition, some models do not support Daikin Air Conditioner Monitoring Tool protocol). VRV7 MA (M9) series are not supported.

** Version 1.0.0 app does not support indoor units with 43 or higher address. Version 1.1.0 or later app supports indoor units up to 256 (or address 0-255), but due to software compatibility issue of VRV outdoor unit, until VRV4 series app can verify its data consistency up to 59 indoor unit.

1. Connection procedure



1. At first, you need to switch off product to ensure your safety.
2. Second, you need to connect BTSC/i2S (Bluetooth-serial converter) with product PCB (X-27A, CN-IF, S2, etc.) by connection harness (5-pin end)
3. Next, check your BTSC/i2S is correctly running (LED is blinking every 0.5sec)
4. Then you can start Daikin Air Conditioner Monitoring Tool App of your mobile device
5. Follow every step explained by following chapters

•S-ISO is not obligatory for products other than Split.
(Other products have 5 pin socket in low voltage area of control PCB)

CAUTION

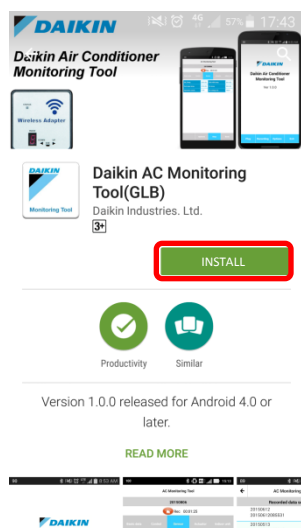
In case of disconnection of Bluetooth communication between BTSC/i2S and Android device, you need to return to main screen of App and repeat connection procedure. (communication would not be restored automatically even if your device will enter the range of Bluetooth connection.)

→ Bluetooth connection range is approximately 5 meters (class2 device)

2. Installation App to your device

1. Please go to Google Play store and search “Daikin Air Conditioner Monitoring Tool” app.
2. Install the found App to your device.

•If the App was not found in Google Play store, the App (and BTSC/i2S) is not available in your country due to local regulation reason.



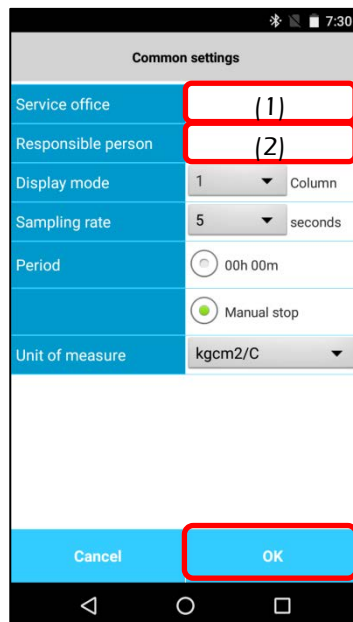
Caution for Android6.0 or later device users:
Do not tap “Open” after installation and change permission settings before 1st time launch of app (see chapter 12).

3. App common settings (options)

1. Locate app (Daikin logo) from app drawer and tap to launch.
2. Tap "Option" to enter common settings screen.



App main screen of first launch



Common settings screen

See page5 for other Setting items

3. By entering "Service office" and "Responsible person" in Common settings screen, all menus will be available. (below)

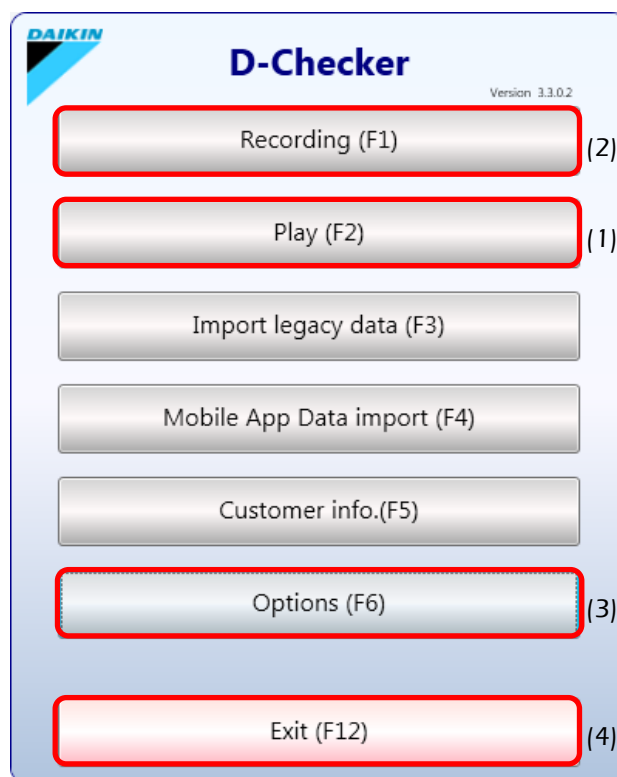


App main screen after set of Common settings

4. Main menu



App main screen

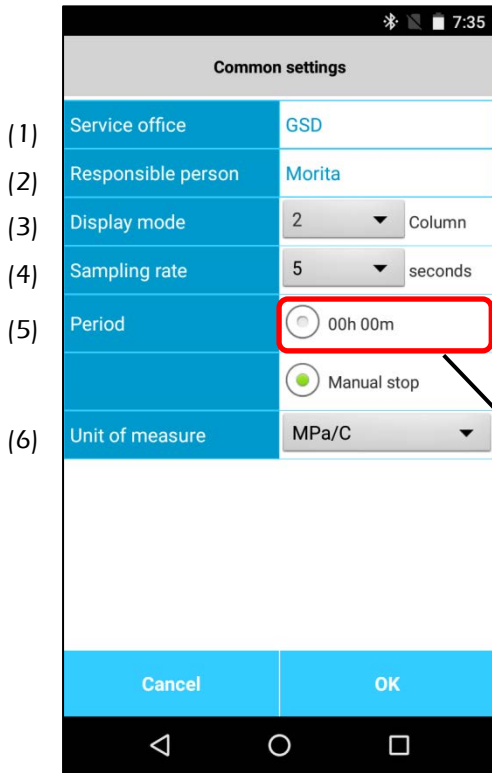


PC software main screen

In the bottom of main menu, there are 4 buttons which corresponds to some buttons of PC version software (indicated as number (1) to (4) in above picture)

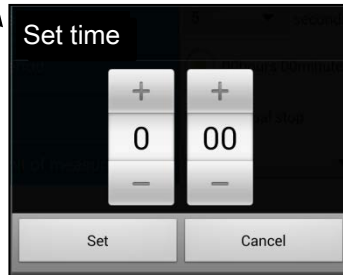
1. Play : plays back recorded data by same device (import data from other devices is not supported by this version)
2. Recording: records operation data with Bluetooth communication
3. Options: configures common settings such as number of columns of display data, recording interval or units of measure.
4. Exit: stops App and back to Android home screen.

5. Common settings (options)

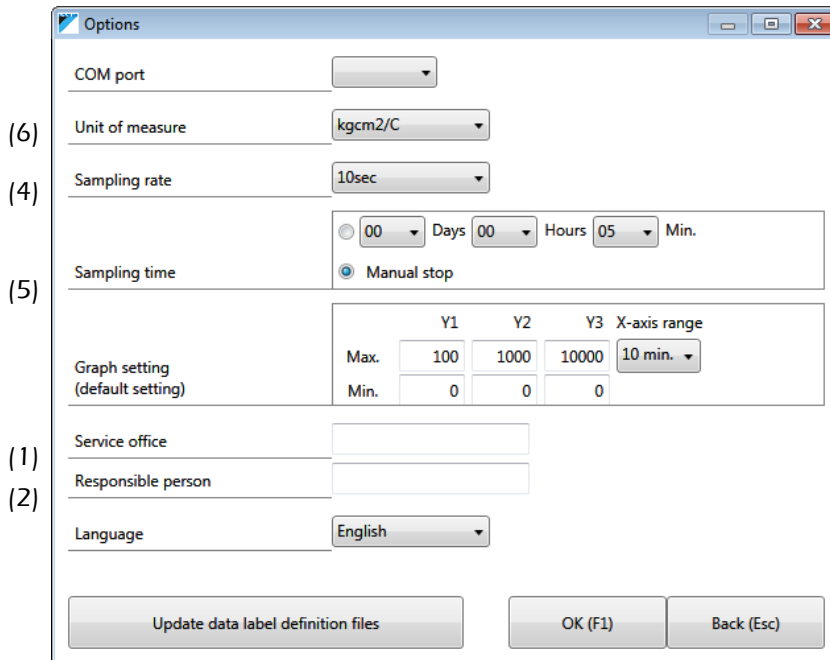


App common settings screen

1. Service office: enter service office (station) name of user belonging to
2. Responsible person: enter name of service engineer who uses this app
3. Display mode: select 1 or 2 columns for recording or playback mode
4. Sampling rate: select interval of recording data in recording mode
5. Period: data recording duration
6. Unit of measure: select appropriate unit combination of pressure/temperature



Recording period setting
By tap "00hours00minutes" in period setting, recording period setup screen appears.
→ Duration can be set up to 23 hours 59 minutes.

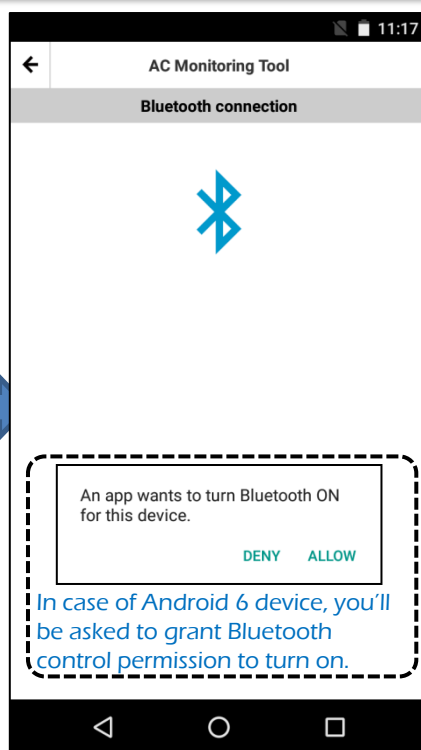


Corresponding screen of PC version software (Options)

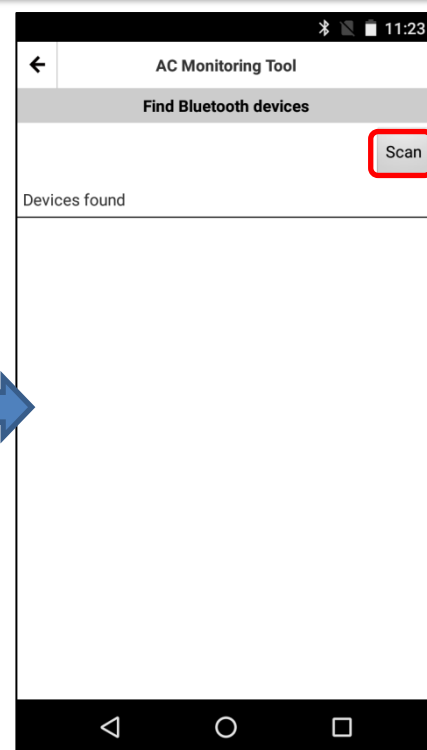
6. How to record data (1/3)



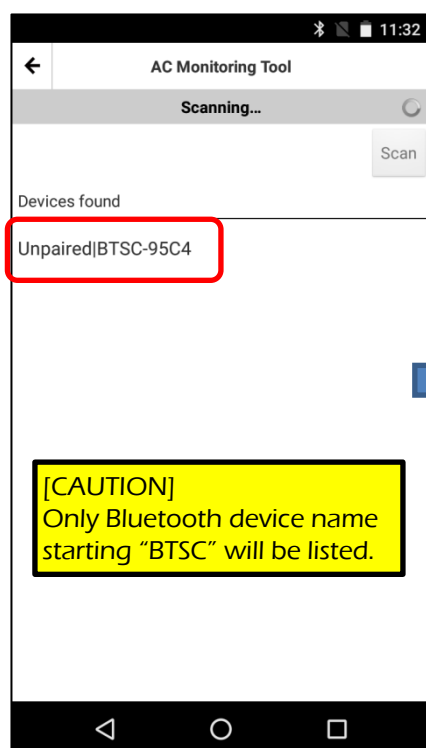
Tap Recording button to enter recording mode



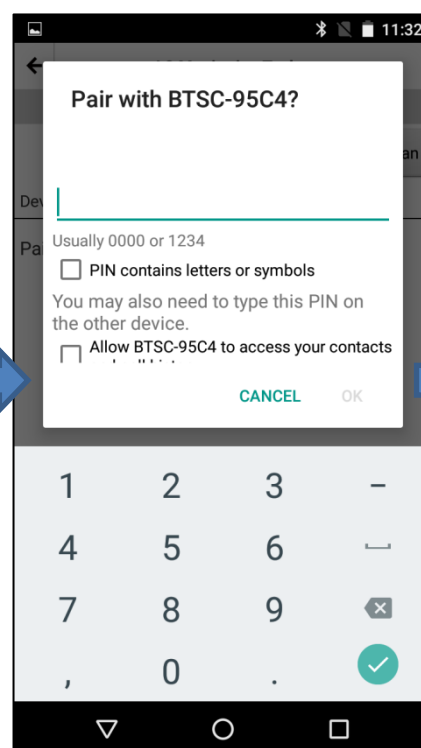
If Bluetooth is off, you'll be requested to turn it on (tap Bluetooth symbol to proceed)



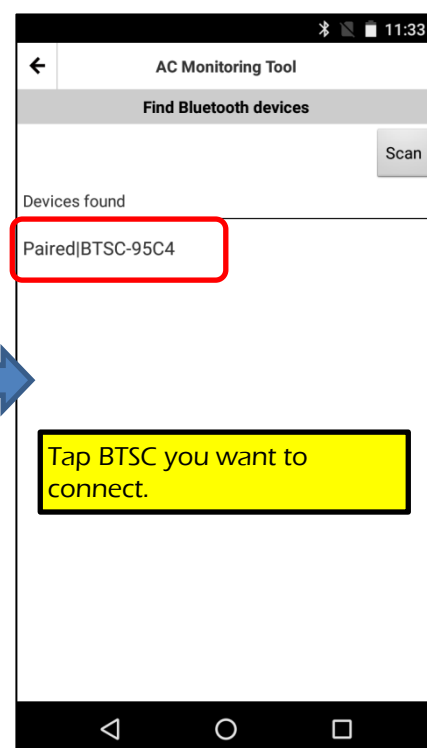
Tap Scan button to find available Bluetooth devices



Tap desired BTSC device you want to connect.



Enter "3131" as passkey for pairing.
(All BTSC uses same passkey, no further actions necessary by



After completion of pairing, tap desired BTSC to proceed.

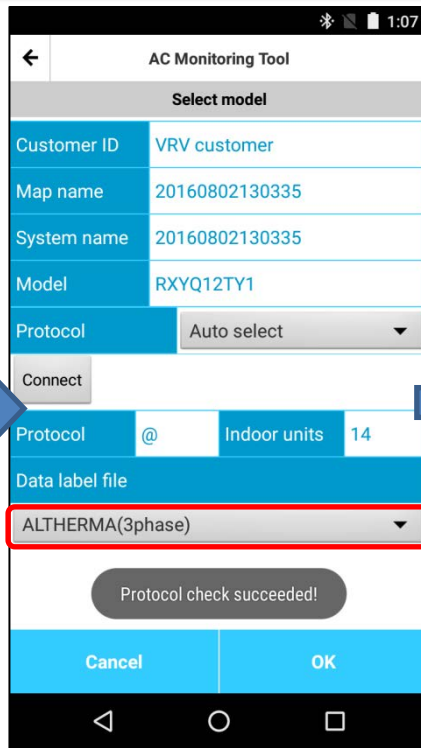
****Caution to use the latest BTSC version****

Latest BTSC has changed display name of Bluetooth device on tablet/smartphone to "BTSC", it is necessary to be careful if you have multiple BTSC paired with your device. (see chapter 13)

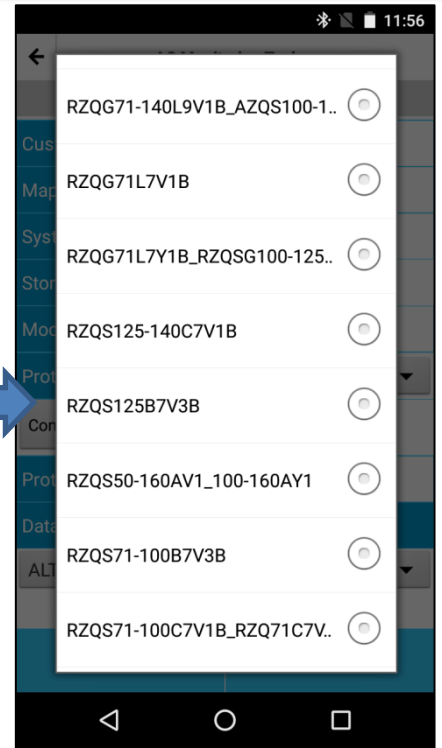
6. How to record data (2/3)



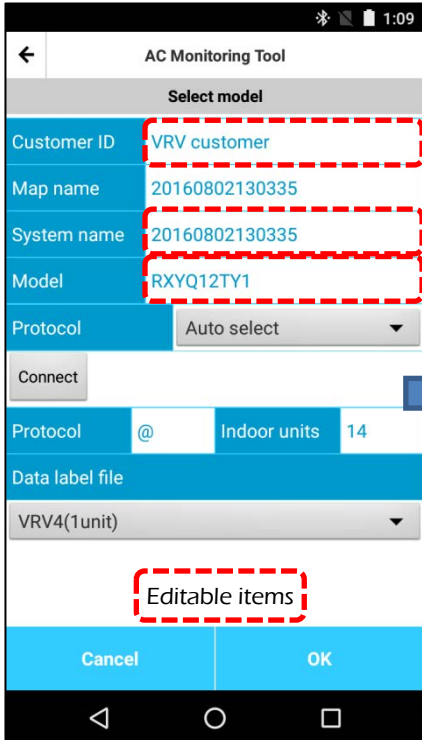
Select correct protocol, then tap Connect to detect protocol
For Altherma hydro, always select Altherma (auto select does not work in this case)



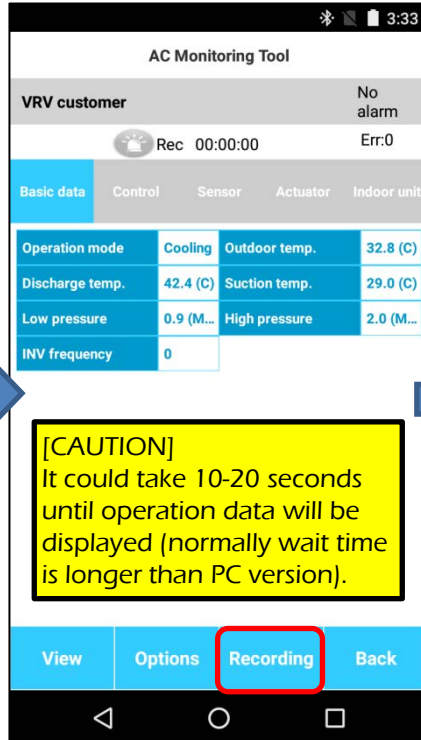
Successful detection results in this way, then tap Data label file to find data label to use



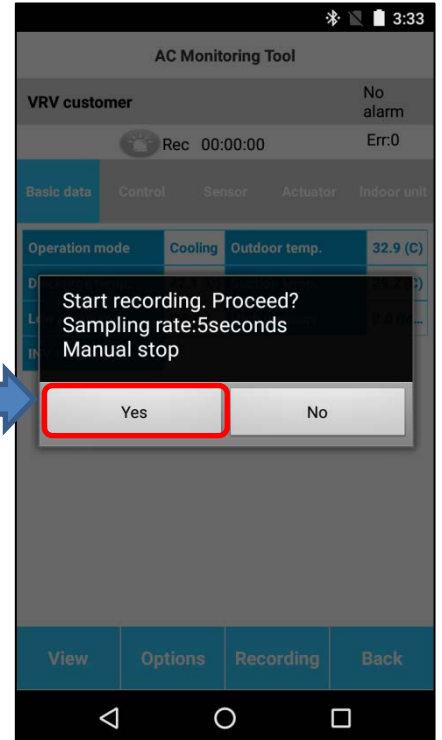
Select correct model/series



If necessary, correct "Customer ID", "System name" and "Model" then tap OK to show enter operation data screen (Map name cannot be edited)



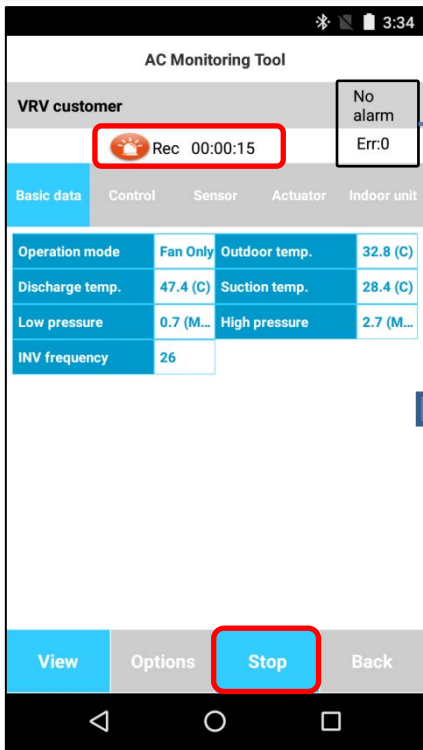
Now you are connected to product and able to see operation data. To start recording, tap Recording to proceed.



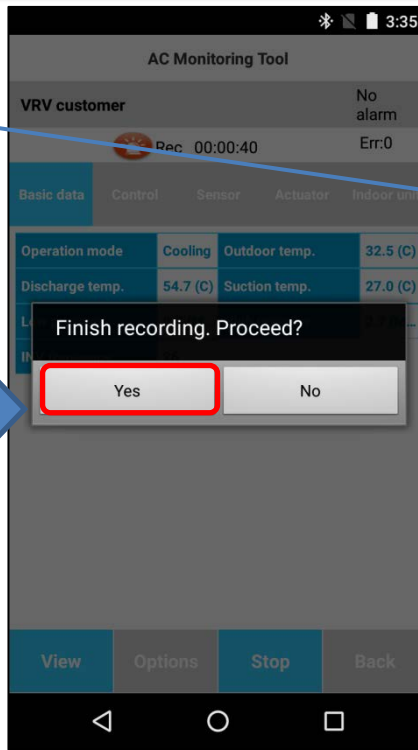
Tap Yes to start recording



6. How to record data (3/3)



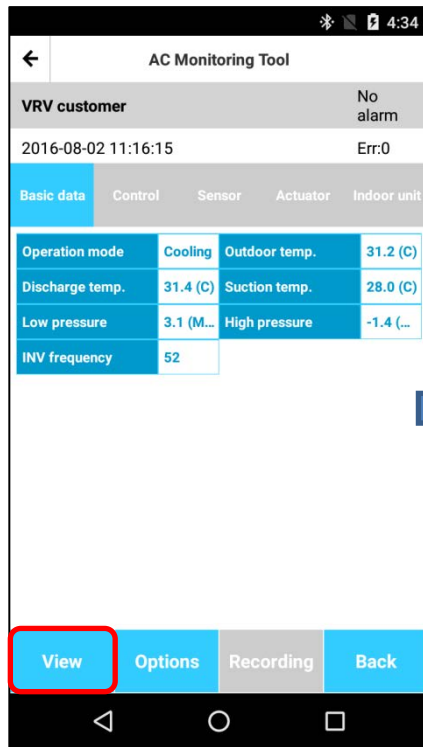
While recording, "Rec" icon turns to red from gray



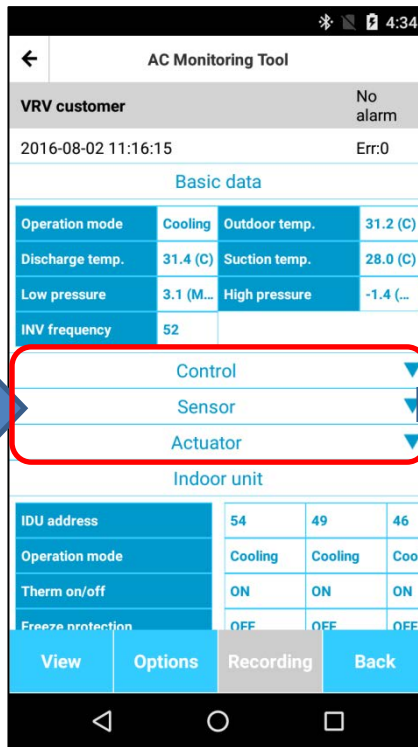
To stop recording, tap Stop button. And tap Yes to stop recording.

No alarm	In alarm	Alarm status
Err:0	Err:U1	Alarm code

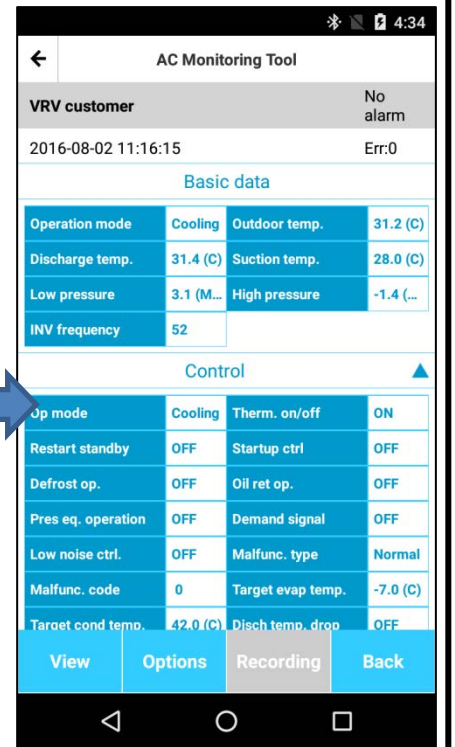
On upper right corner, alarm status and alarm code are always indicated. In case of no alarm, "0" is indicated.



By tapping "View" button to change tab view to single view.



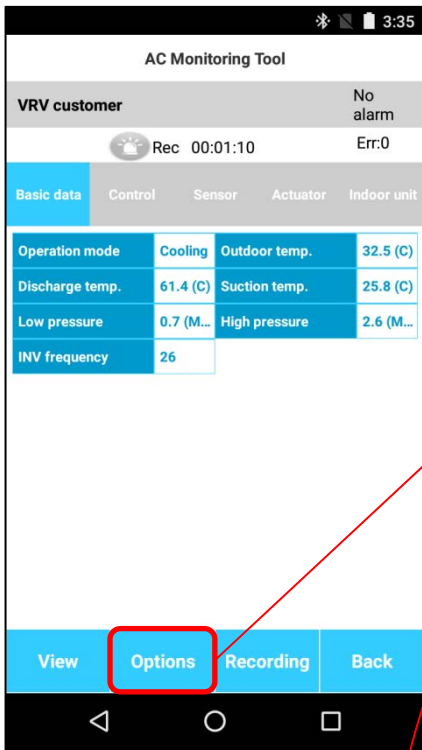
By tapping each category name, chart expands/collapses. (single view is more suitable for large screen devices such as tablets)



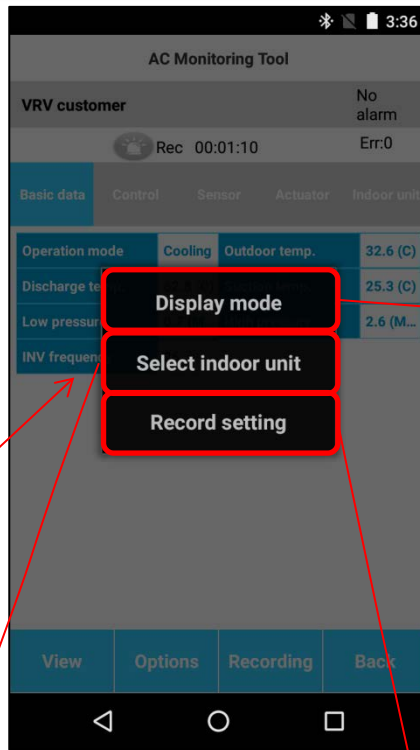
CAUTION

When connecting to Split outdoor unit, app cannot detect protocol type if outdoor unit is in "standby electricity saving mode." In case of turned off outdoor unit LED, please switch on indoor unit by remote controller to cancel "standby electricity saving mode."

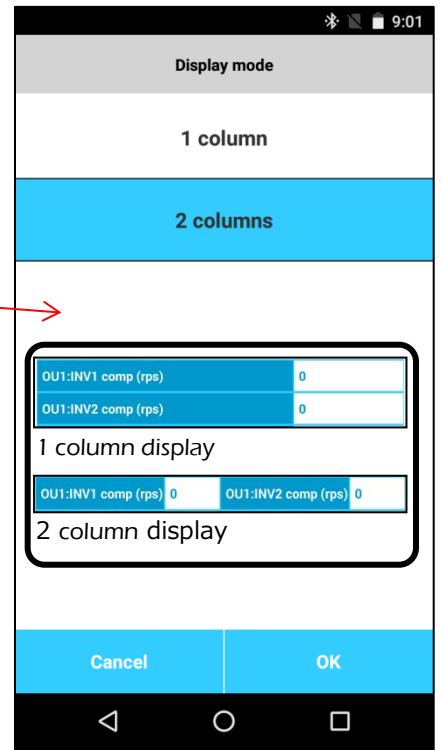
7. Option button in record mode (while not recording)



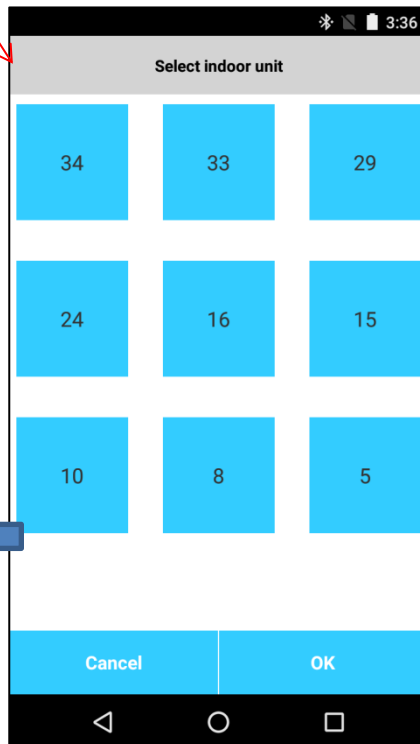
While not recording, you can change settings by tap Options



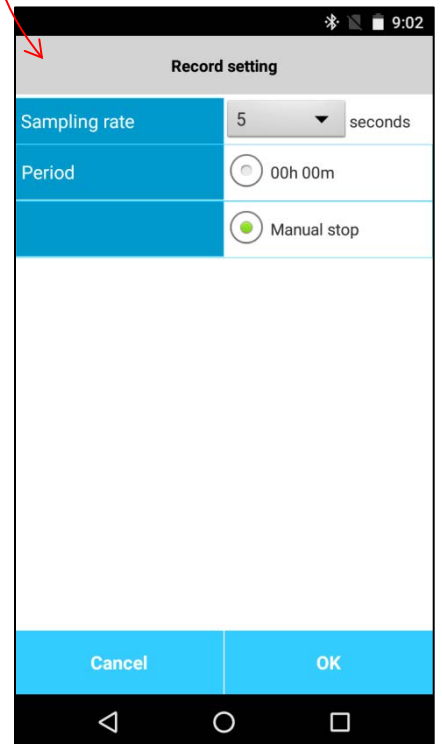
Select desired items to change



Select number of columns of data to be displayed

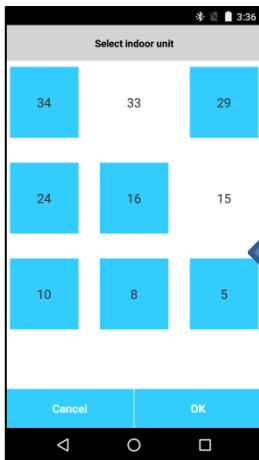


Select address of indoor unit which needs to be hidden



Same as options menu, you can change recording option here

In case of hide address 15, 33 indoor units



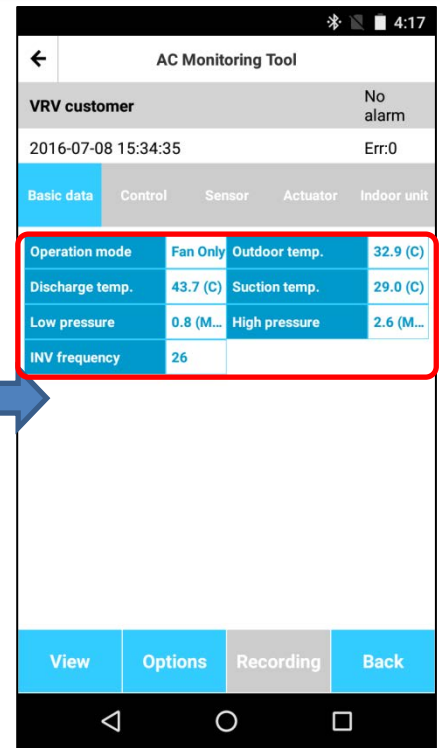
8. How to playback recorded data



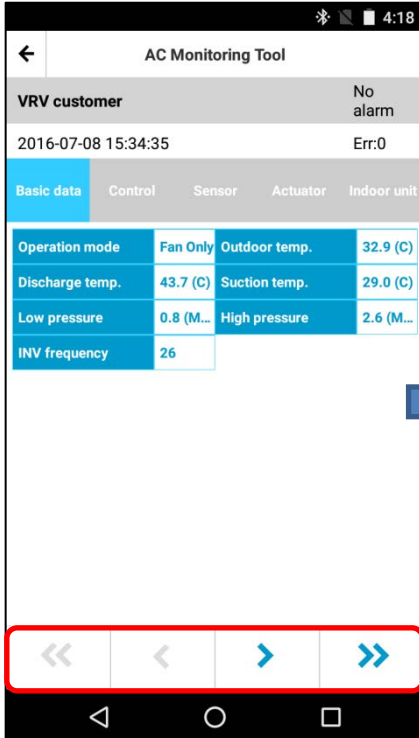
Tap Play button to enter playback mode



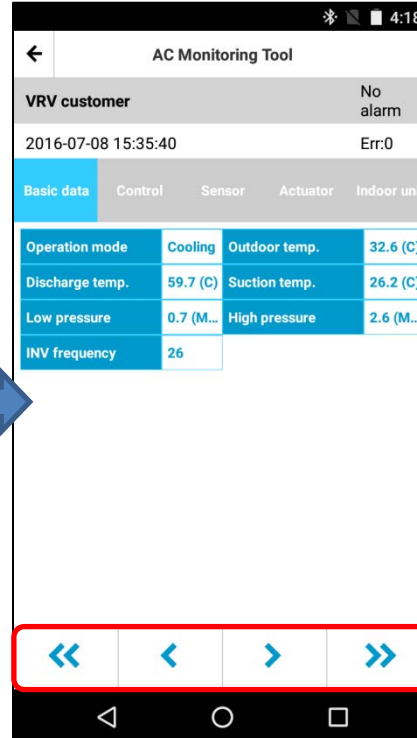
Tap desired item to see data



Tap anywhere in the chart area to show "timescale arrow"

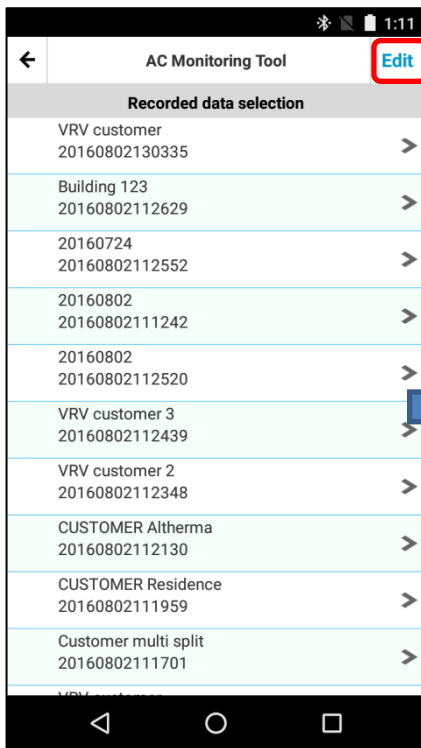


Tap > to proceed to next time slot, tap >> to proceed to the end of record

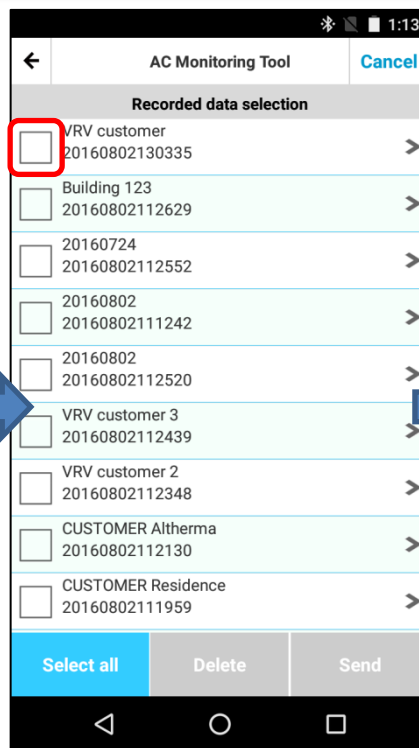


Tap < to go back to previous time slot and tap << to proceed to the beginning of record

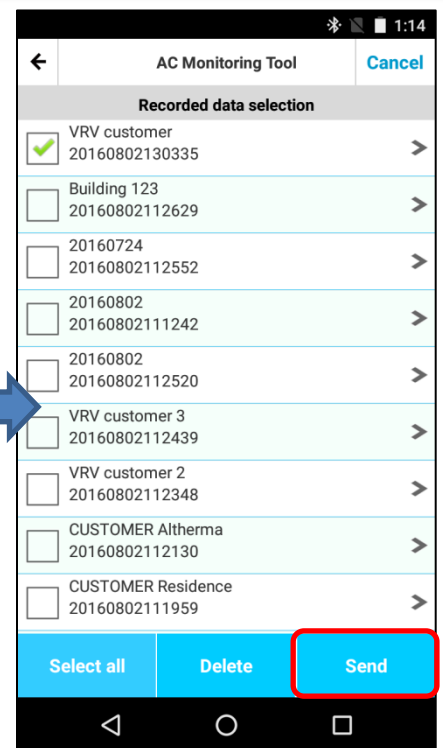
9. How to send data to other person



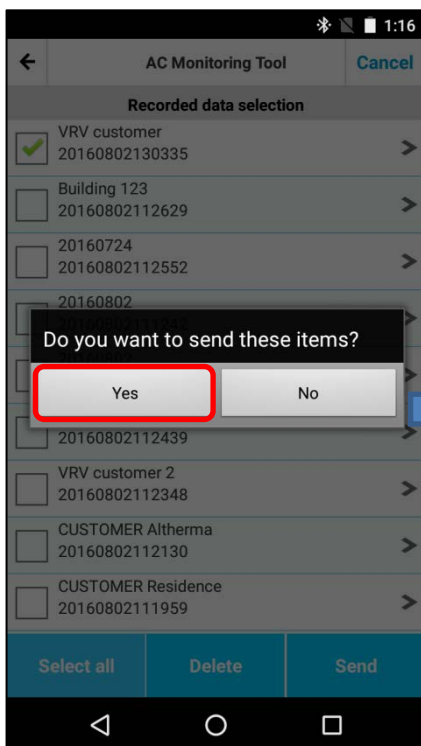
Tap Edit to enter edit mode in Play menu



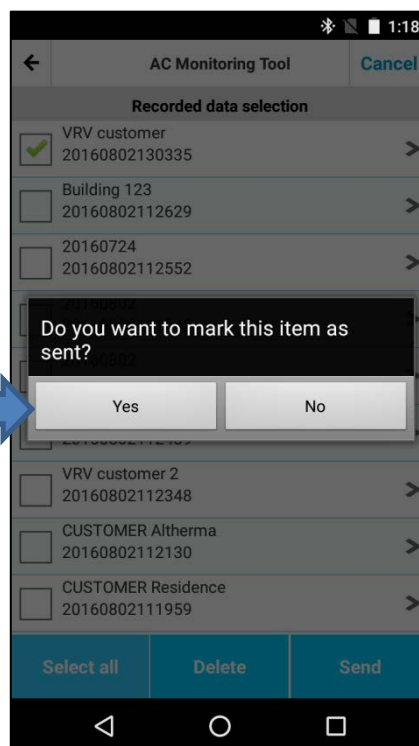
Tap to select data to be sent (if you want to select all data, tap "Select all")



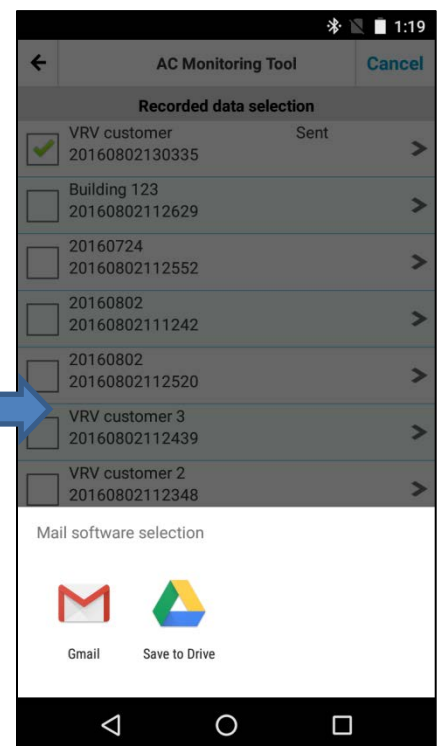
Tap Send to proceed (tap to Delete to remove recorded data)



Tap Yes to proceed

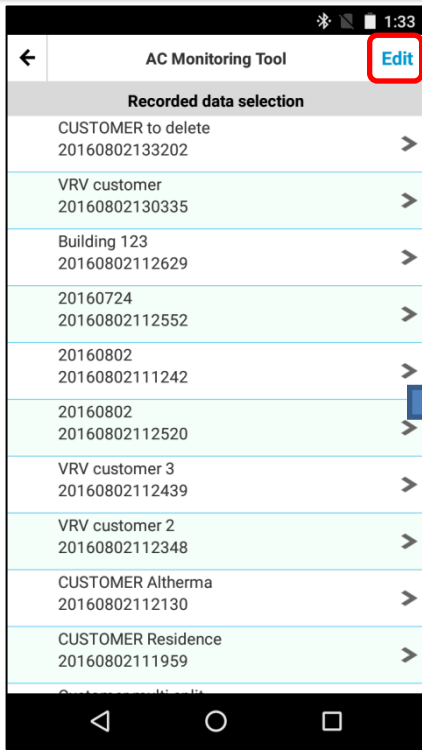


Tap Yes to mark data as "sent", if not please tap No to proceed

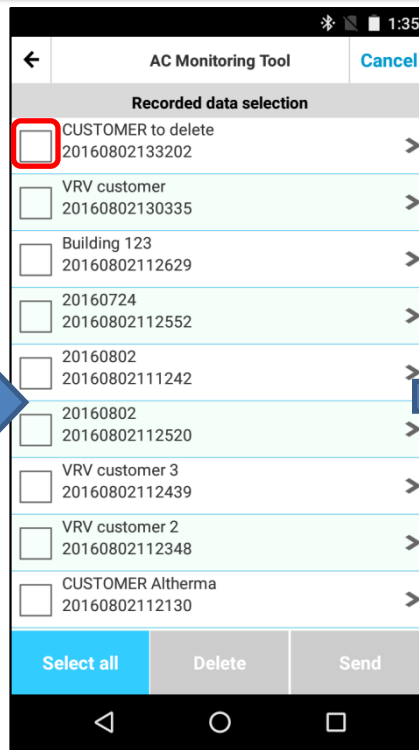


Select your email application to send data, then send data as email attachment by email app

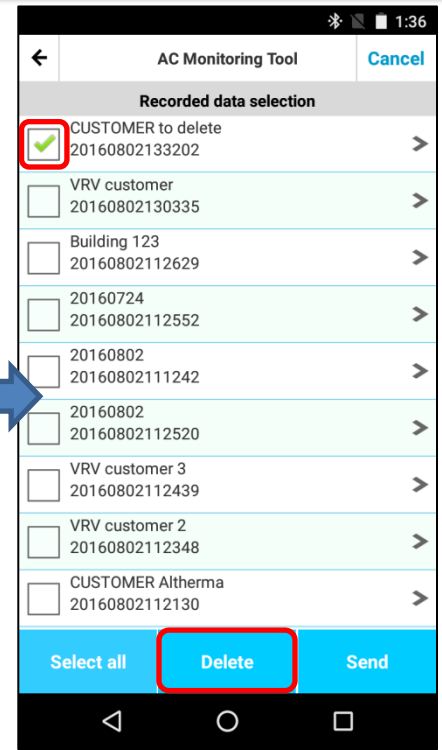
10. How to delete recorded data



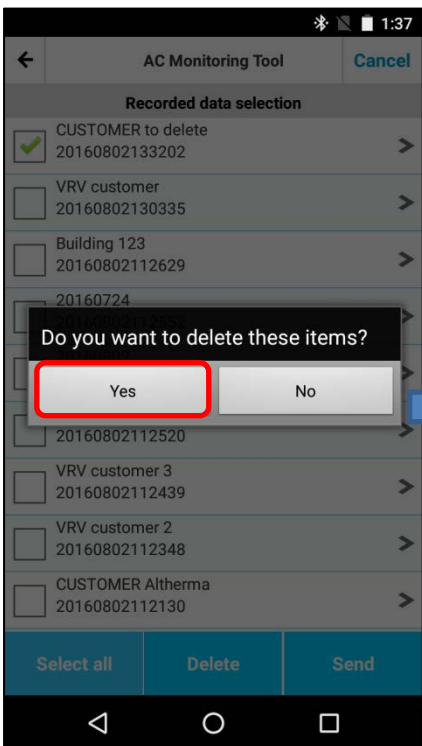
Tap Edit to enter edit mode



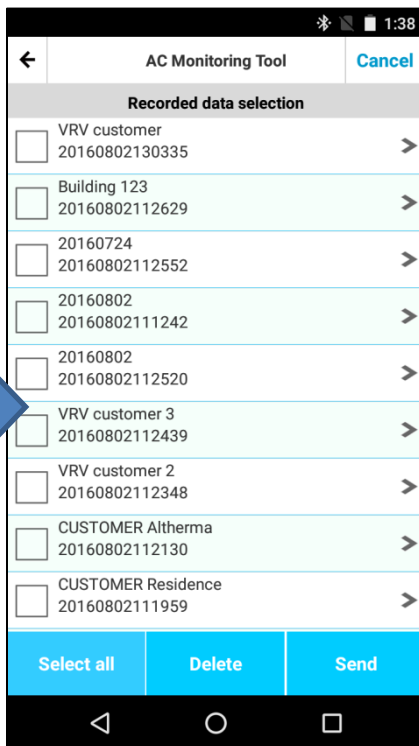
Tap check box on the left of desired data to delete



Tap Delete to proceed



Tap Yes to proceed



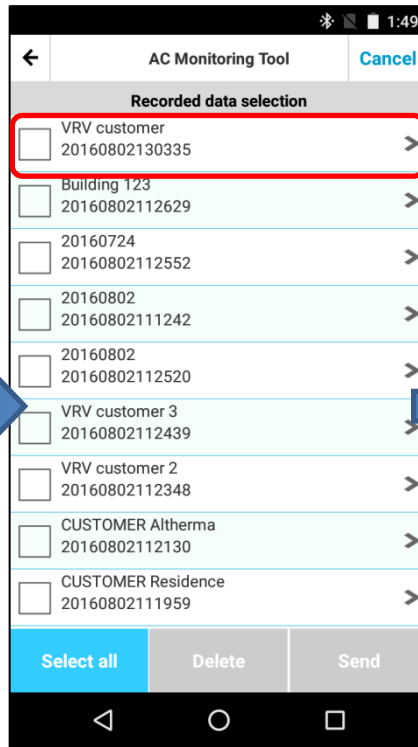
Desired data has been deleted

11. How to edit recorded data (add sent date/time)

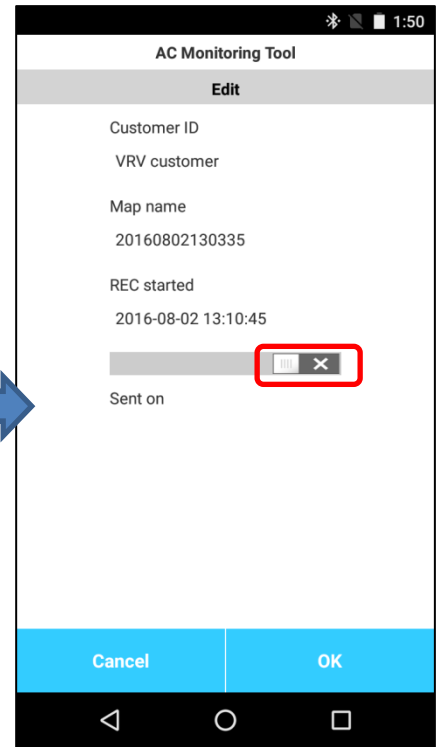
In record data list, tap Edit button to enter edit mode then tap particular data to enter individual data edit screen. In this screen, add/remove data sent date/time information.



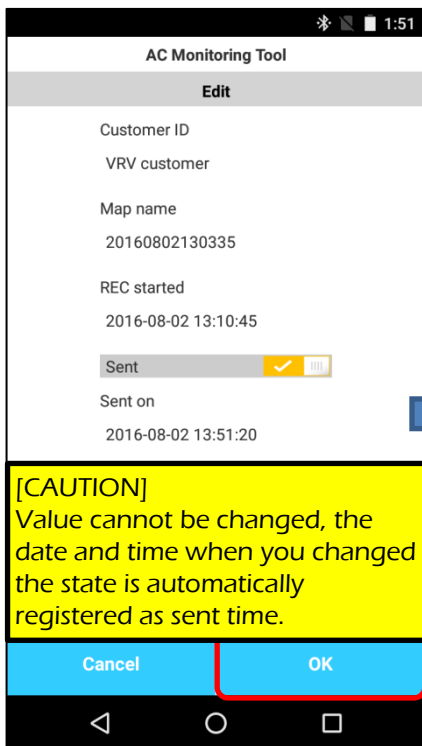
Tap Edit to enter edit mode



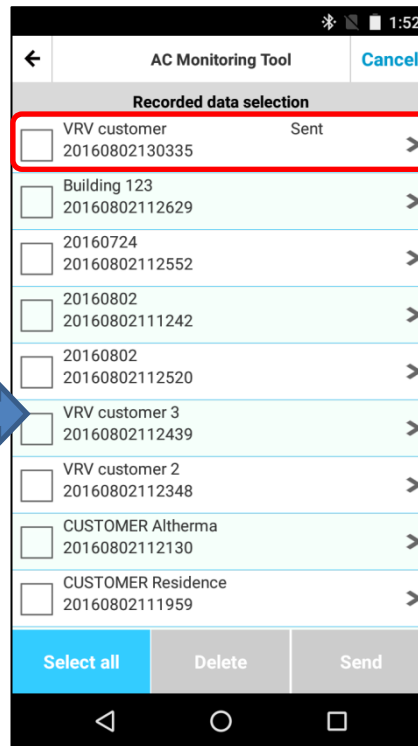
Tap data name to which you want to add sent date/time.



Tap slide switch to select on/off of send date/time information.



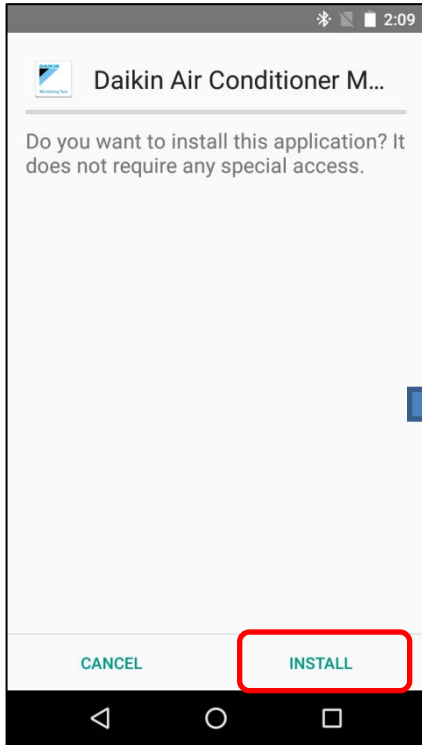
Tap OK to confirm



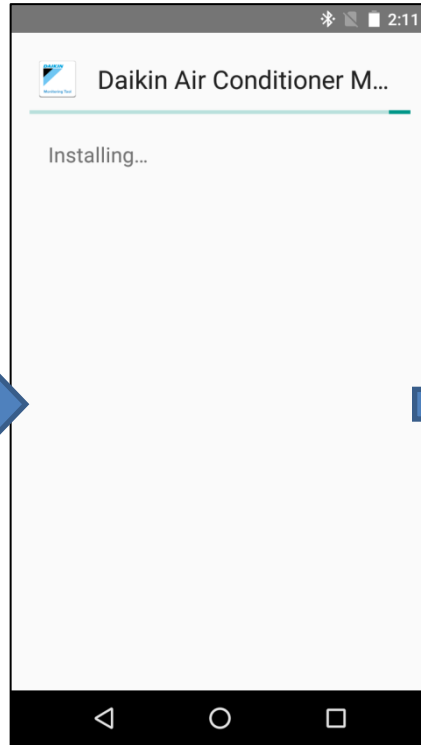
Desired data has been marked as sent

12. Cautions to using app on Android 6.0 or later devices (1/2)

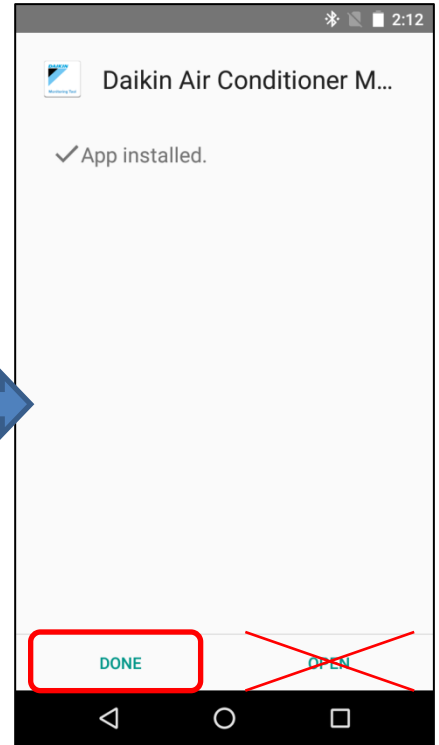
In case of using this app with Android 6.0 or later devices, it is necessary to grant some permissions to app **BEFORE** first time of launching the app. Unless doing this changes, app would not correctly work and you need to install app again.



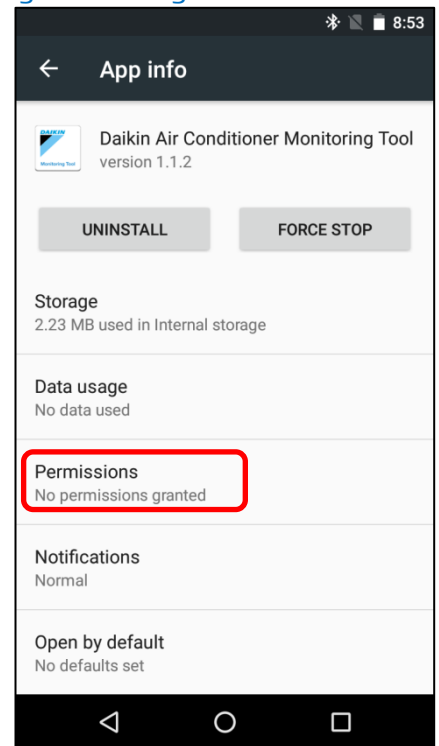
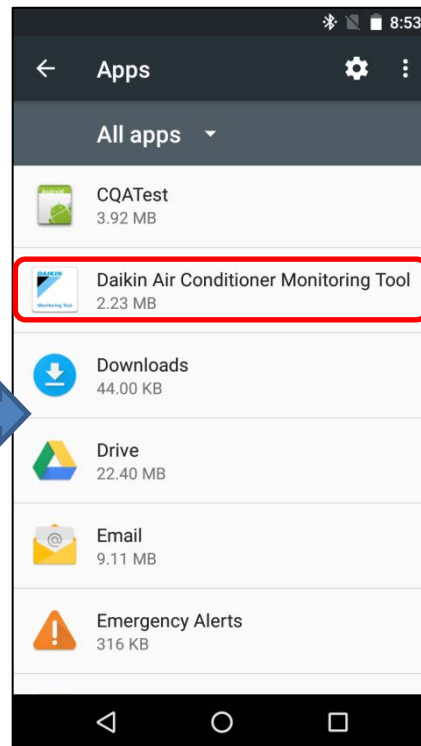
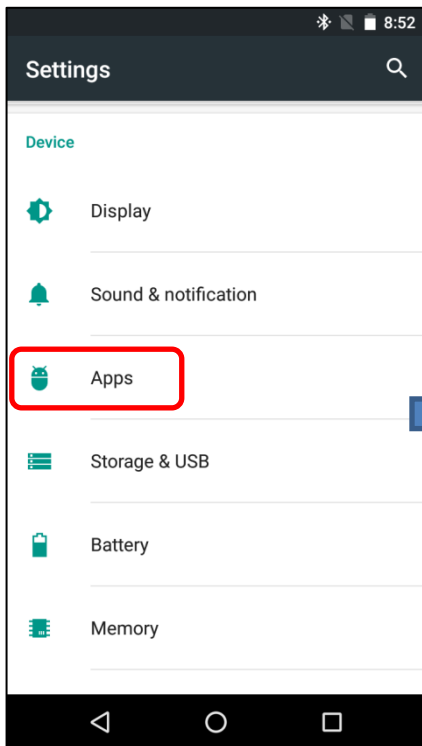
Tap "INSTALL" to start installation



Installation finishes in 5 - 10 sec



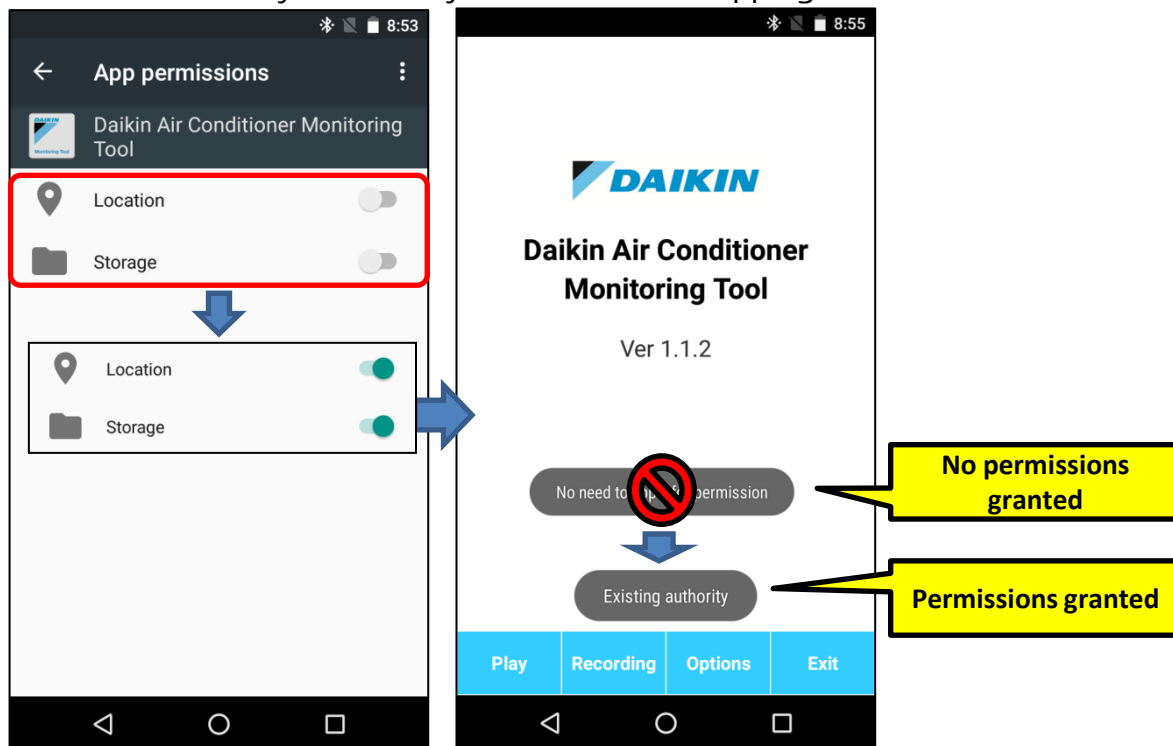
DO NOT tap "OPEN". Tap "DONE" to close this screen and go to "Settings"



Go to "Settings > Apps > "Daikin Air Conditioner Monitoring Tool" >Permissions"

12. Cautions to using app on Android 6.0 or later devices (2/2)

In case of using this app with Android 6.0 or later devices, it is necessary to grant some permissions to app **BEFORE** first time of launching the app. Unless doing this changes, app would not correctly work and you need to install app again.

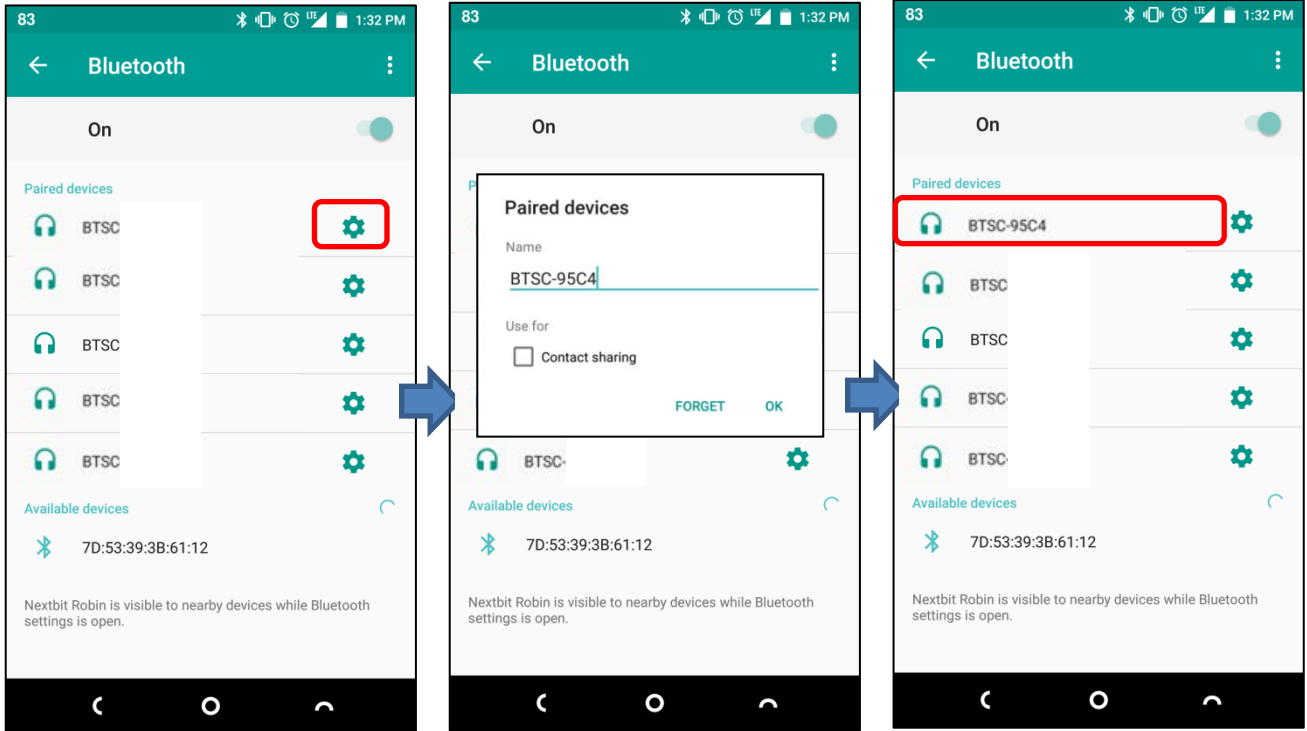


Turn both permissions on

If you have not done this change, "No need to apply for permission" is indicated instead of "Existing authority".

13. Caution regarding latest version of BTSC (in case of multiple paired BTSC with single device)

Bluetooth device name of the latest version of BTSC has changed to "BTSC", without the last 4 digit of its serial number as previous version had. Therefore it is difficult to identify particular BTSC to connect from the paired BTSC with same Bluetooth device name, so it is recommended to change display name of Bluetooth device as below procedure.



Tap gear shaped icon on the right hand of BTSC you need to change its display name.

Enter the last 4 digits of serial number following to "BTSC-" in "Name" field, then tap OK

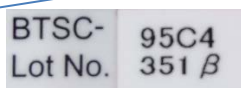
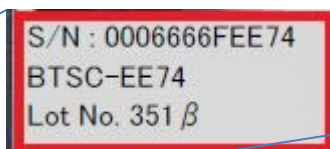
Rename has been done (change is only effective to this Android device, same procedure is required for the other Android devices)

To identify BTSC version without check by Android device

- 1. Package box:** Latest version has additional contents which identify itself as MFi certified device.
- 2. Back label:** Latest version has 12 digit serial number on the back label.



(1) Package box appearance
Left: latest version
Right: former version
(latest version has additional printed contents for MFi certification)



(2) Back label contents
Top: latest version
Bottom: former version
(latest version has 12 digit serial number)